



Configuring KlasTA to Answer with a KIV-7 using AERO

KB article reference no. Q103101

Version: 1.0

Keywords: KlasTA, KIV-7, Answer, AERO

The information in this article applies to:

- KlasTA
- KIV-7

Table of Contents

1.0 Introduction.....	2
2.0 Cable Connections	2
3.0 Configure the KIV-7	2
4.0 Configuring KlasTA	3

Table of Figures

Figure 1. Sample Scenario using the KIV-7 for Type-1 Encryption	2
Figure 2. KlasTA Configuration Main Screen.....	3
Figure 3. KlasTA Configuration Profiles Screen.....	3
Figure 4. KlasTA Input Device Screen.....	4
Figure 5. KlasTA Network Type Screen	4
Figure 6. KlasTA Bonding Mode Screen	5
Figure 7. KlasTA Dial and Answer Screen	5
Figure 8. KlasTA H.320 VTC Screen.....	6
Figure 9. KlasTA D-Channel Protocol Screen	6
Figure 10. KlasTA Extra Configuration Commands Screen	7
Figure 11. KlasTA Configuration Summary Screen.....	7
Figure 12. KlasTA Configuration Progress Screen	8
Figure 13. KlasTA Save Profile Screen.....	8

1.0 Introduction

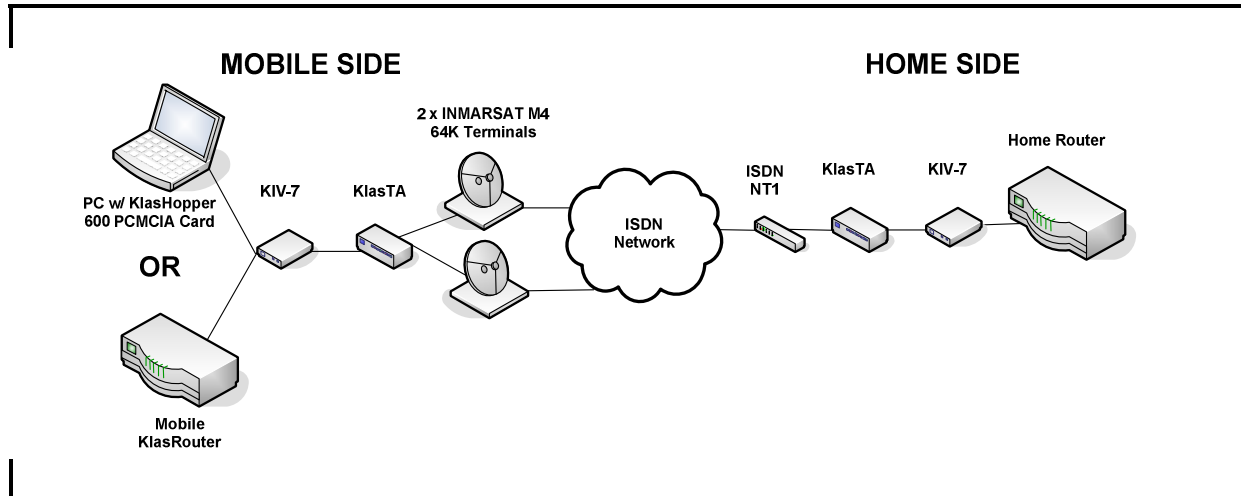


Figure 1. Sample Scenario using the KIV-7 for Type-1 Encryption

This document describes how to configure a KlasTA on the Home Side connected to a KIV-7 to answer a 128K ISDN call, as shown in Figure 1. When configured for answer mode, KlasTA is continually listening for incoming calls and will answer automatically.

In this example, KlasTA uses the AERO protocol in order to multiplex the 128K data stream to the RS-530 synchronous serial port connected to the KIV-7. The KIV-7 will unencrypt the data and send it to an RS-530 synchronous serial port on the Home Side router for further processing. Follow the directions in the sections below outlining the steps from the KlasTA configuration wizard.

2.0 Cable Connections

Prior to beginning, ensure the following cable connections have been properly secured:

1. Power cord is plugged in and KlasTA is on.
2. Control Port Cable is connected to the PC's serial port.
3. Control Port Cable is connected to the 'Control' port on the front of the KlasTA.
4. Black KIV-7 cable is connected to the male RS-530 connector of the KIV-7 and the female RS-530 synchronous serial port on the KlasTA.
5. ISDN cables are connected to the RJ-45 ISDN Output Ports 1 and 2 from KlasTA and the RJ-45 S/T Input Ports on an ISDN NT1 device.

3.0 Configure the KIV-7

The KIV-7 has a specific sequence of settings that allow it to encrypt data using the RS-530 serial data port. Follow the instructions from Klas Application Note Q100008 in order to configure the KIV-7 so that it will work properly with KlasTA.

Configure KlasTA to Answer with a KIV-7 using AERO

4.0 Configuring KlasTA

Open the KlasTA configuration application on your PC. Follow the steps below to configure KlasTA.

1. Click on the 'Configure' button on the opening menu.

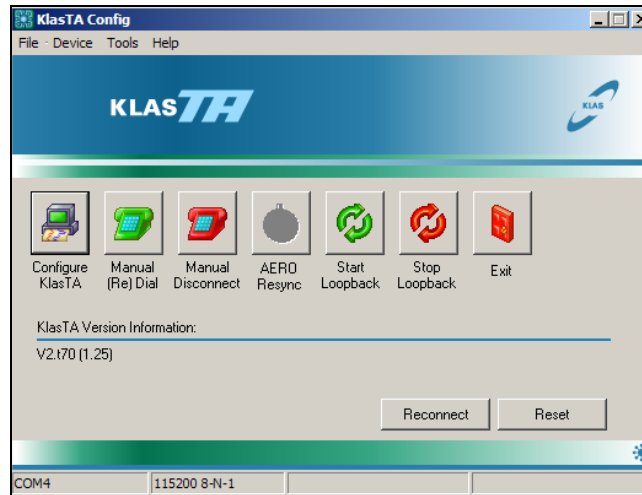


Figure 2. KlasTA Configuration Main Screen

2. Check the 'Configure KlasTA using step-by-step wizard' radio button. Click the 'Next' button to continue and move on to the next configuration screen.

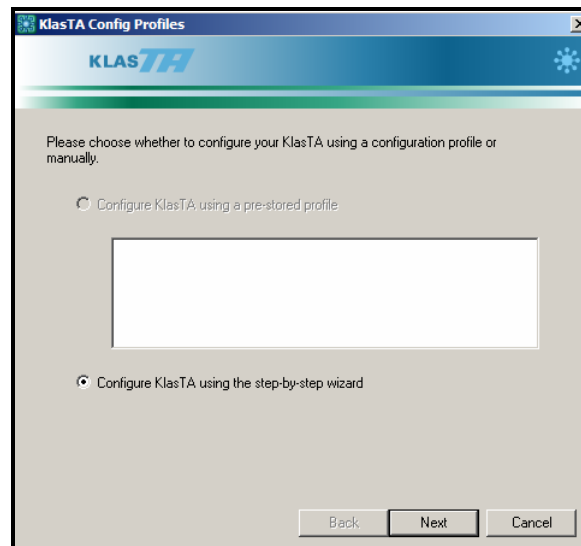
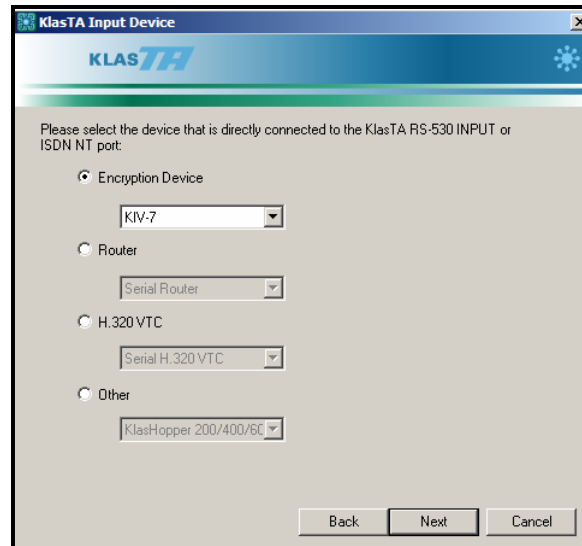


Figure 3. KlasTA Configuration Profiles Screen

Configure KlasTA to Answer with a KIV-7 using AERO

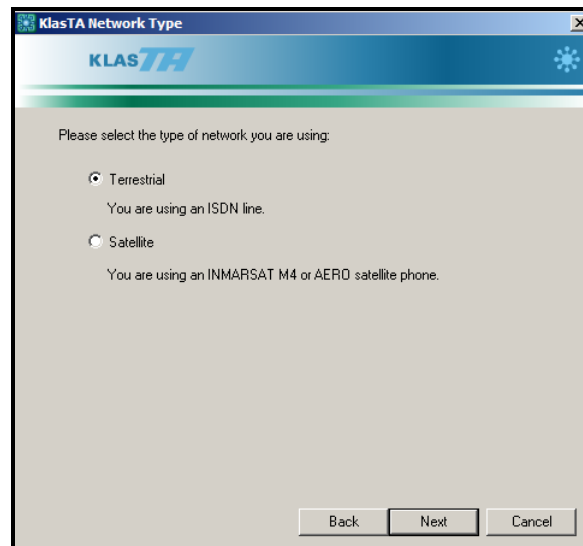
3. Check the 'Encryption Device' radio button and select KIV-7 as the Encryption Device from the pull-down menu. **(Note: This parameter must be identical for the KlasTAs on both sides of the call.)**



The screenshot shows a window titled "KlasTA Input Device" with the KLAS TA logo. The text reads: "Please select the device that is directly connected to the KlasTA RS-530 INPUT or ISDN NT port:". There are four radio button options: "Encryption Device" (selected), "Router", "H.320 VTC", and "Other". Each option has a corresponding pull-down menu. The "Encryption Device" menu is set to "KIV-7". The "Router" menu is set to "Serial Router". The "H.320 VTC" menu is set to "Serial H.320 VTC". The "Other" menu is set to "KlasHopper 200/400/60". At the bottom, there are "Back", "Next", and "Cancel" buttons.

Figure 4. KlasTA Input Device Screen

4. Select the 'Terrestrial' radio button indicating you will be answering the call from an ISDN landline BRI connection.



The screenshot shows a window titled "KlasTA Network Type" with the KLAS TA logo. The text reads: "Please select the type of network you are using:". There are two radio button options: "Terrestrial" (selected) and "Satellite". Below "Terrestrial" is the text "You are using an ISDN line." Below "Satellite" is the text "You are using an INMARSAT M4 or AERO satellite phone." At the bottom, there are "Back", "Next", and "Cancel" buttons.

Figure 5. KlasTA Network Type Screen

Configure KlasTA to Answer with a KIV-7 using AERO

5. Select the 'KLAS AERO' radio button indicating that both KlasTAs will be using the AERO protocol.

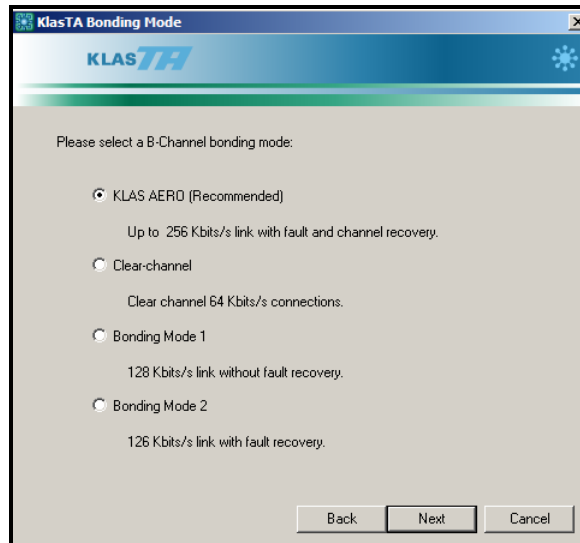


Figure 6. KlasTA Bonding Mode Screen

6. Select the 'Answer only' radio button indicating that KlasTA will continually monitor the line for incoming ISDN calls.

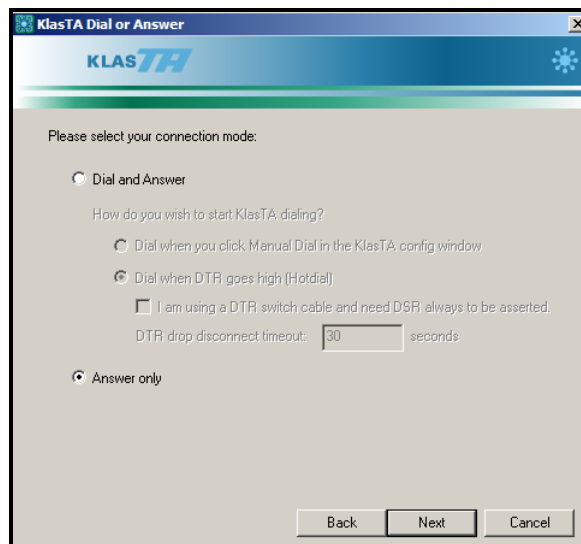


Figure 7. KlasTA Dial and Answer Screen

Configure KlasTA to Answer with a KIV-7 using AERO

7. The KlasTA Aero 56K menu screen is designed for compatibility with H.320 Video Conferencing. The H.320 VTC protocol is based on the ISDN format and only operates at intervals of 64K and 56K. Since the Aero protocol uses one out of 64 bytes for bandwidth management, the actual throughput is 63K which will not work at the 64K H.320 variant. Therefore, when using the Aero protocol, you must use the 56K version of the H.320 VTC protocol. If you plan to conduct an H.320 VTC, check the box; otherwise, leave the box unchecked.

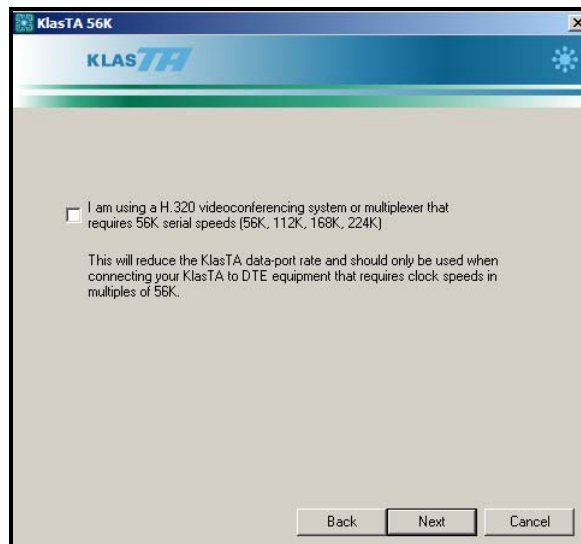


Figure 8. KlasTA H.320 VTC Screen

8. Select the radio button next to the ISDN Switch-Type or D-Channel Protocol you are using, as shown in Figure 9 with the NI1/NI2 protocol. If NI1/NI2 or AT&T 5ESS is chosen, you must also enter the Service Profile Identifiers (SPIDs) associated with the ISDN lines connected to KlasTA. SPIDs are assigned by your local Telecom Provider and are unique for each 64K channel.

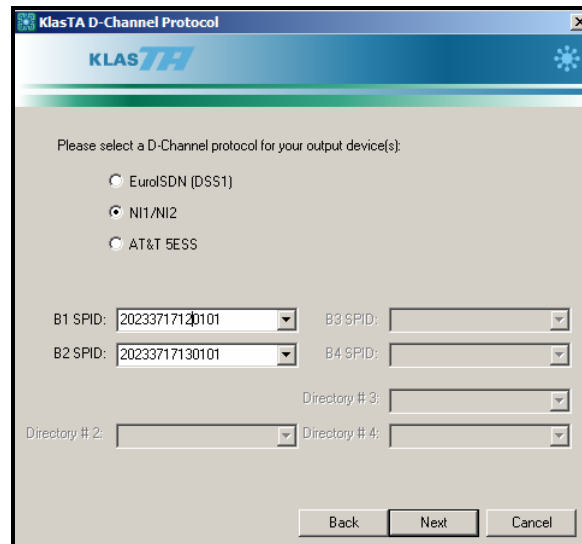
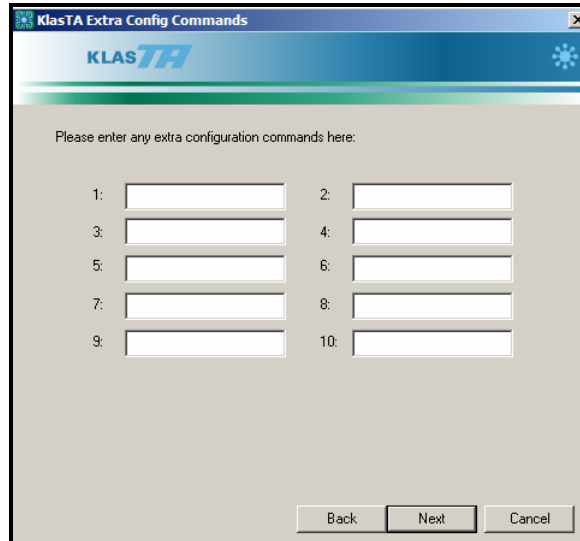


Figure 9. KlasTA D-Channel Protocol Screen

Configure KlasTA to Answer with a KIV-7 using AERO

- The Extra Config Commands screen allows you to enter manual commands that enable seldom used features. No extra configuration commands are needed for this setup.



KlasTA Extra Config Commands

KLAS^{TA}

Please enter any extra configuration commands here:

1: 2:

3: 4:

5: 6:

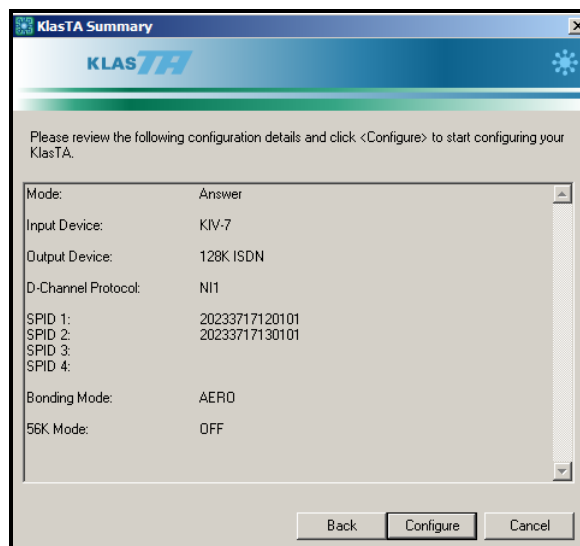
7: 8:

9: 10:

Back Next Cancel

Figure 10. KlasTA Extra Configuration Commands Screen

- Review the configuration options to ensure they are correct and then click on the 'Configure' button to initiate the configuration sequence on the KlasTA.



KlasTA Summary

KLAS^{TA}

Please review the following configuration details and click <Configure> to start configuring your KlasTA.

Mode:	Answer
Input Device:	KIV-7
Output Device:	128K ISDN
D-Channel Protocol:	NI1
SPID 1:	20233717120101
SPID 2:	20233717130101
SPID 3:	
SPID 4:	
Bonding Mode:	AERO
56K Mode:	OFF

Back Configure Cancel

Figure 11. KlasTA Configuration Summary Screen

Configure KlasTA to Answer with a KIV-7 using AERO

11. Click on the 'OK' button once the configuration sequence has successfully completed.

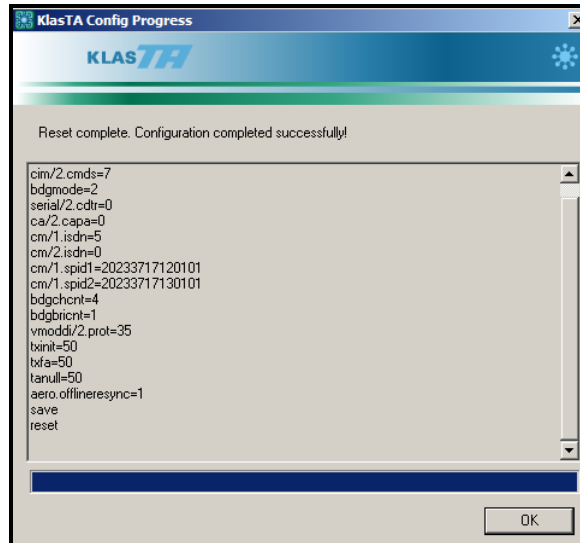


Figure 12. KlasTA Configuration Progress Screen

12. If desired, click the 'Yes' radio button to save this configuration as a Profile. Click on the 'Finish' button to go back to the Main Menu.

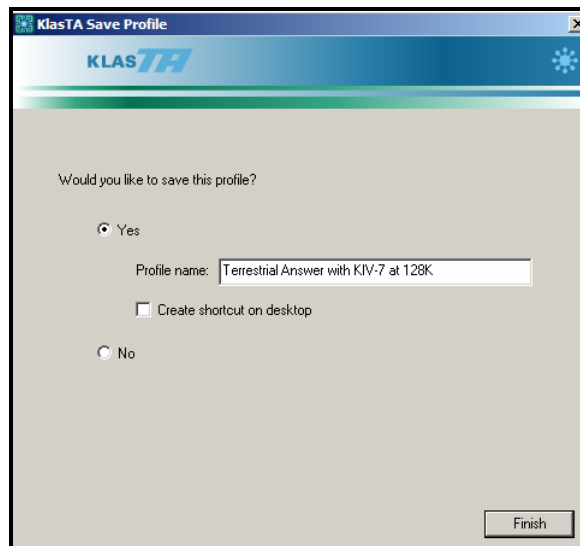


Figure 13. KlasTA Save Profile Screen

MORE INFORMATION

For more information about KlasTA and other Klas products, visit the following Klas website:

<www.klasonline.com>

Copyright © 2006 Klas Ltd. All rights reserved. All company and brand names are trademarks or registered trademarks of their respective owners.

DISCLAIMER OF WARRANTY: THE DOCUMENT IS PROVIDED AS IS, WITHOUT WARRANTY OF ANY KIND. TO THE MAXIMUM EXTENT PERMITTED BY APPLICABLE LAW, WITH RESPECT TO THE DOCUMENT AND / OR ANY ASSOCIATED ON-LINE INFORMATION, KLAS DISCLAIMS ALL WARRANTIES, EITHER EXPRESS OR IMPLIED, INCLUDED BUT NOT LIMITED TO IMPLIED WARRANTIES OF MERCHANTABILITY AND FITNESS FOR A PARTICULAR PURPOSE, AND NONINFRINGEMENT.