



Configuring a KlasTA to Answer with an OMNIxi using Clear Channel

KB article reference no. Q103108

Version: 1.0

Keywords: KlasTA, OMNIxi, Answer, Clear Channel

The information in this article applies to:

- KlasTA
- OMNIxi

Table of Contents

1.0 Introduction.....	2
2.0 Cable Connections	2
3.0 Configure the OMNIxi to work with KlasTA.....	2
4.0 Configuring KlasTA	3

Table of Figures

Figure 1. Sample Scenario using the OMNIxi for Type-1 Encryption.....	2
Figure 2. KlasTA Configuration Main Screen.....	3
Figure 3. KlasTA Configuration Profiles Screen.....	3
Figure 4. KlasTA Input Device Screen.....	4
Figure 5. KlasTA Network Type Screen	4
Figure 6. KlasTA Bonding Mode Screen	5
Figure 7. KlasTA Dial and Answer Screen	5
Figure 8. KlasTA Hunt Group Numbering Screen	6
Figure 9. KlasTA D-Channel Protocol Screen	6
Figure 10. KlasTA Extra Configuration Commands Screen	7
Figure 11. KlasTA Configuration Summary Screen.....	7
Figure 12. Downloading Clear Channel Firmware Version	8
Figure 13. KlasTA Configuration Progress Screen	8
Figure 14. KlasTA Profile Screen.....	9

1.0 Introduction

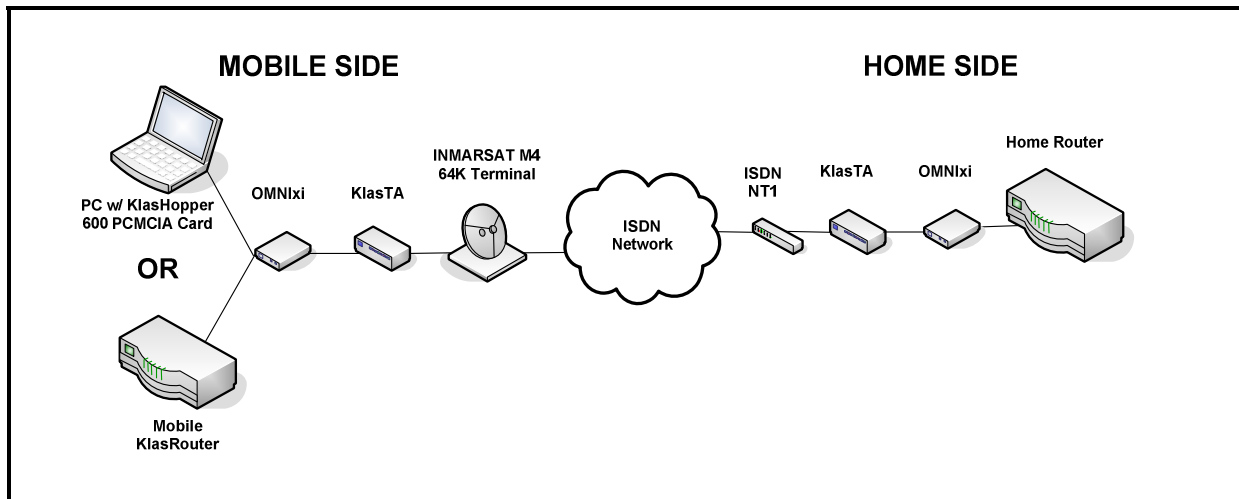


Figure 1. Sample Scenario using the OMNixi for Type-1 Encryption

This document describes how to configure a KlasTA connected to an OMNixi on the Home Side to answer a 64K ISDN call, as shown in Figure 1. When configured for answer mode, KlasTA is continually listening for incoming calls and will answer automatically.

In this example, KlasTA uses the Clear Channel protocol since there is only one channel of information and multiplexing multiple channels is not necessary. The OMNixi will unencrypt the data and send it to an RS-530 synchronous serial port on the Home Side router for further processing. Follow the directions in the sections below outlining the steps from the KlasTA configuration wizard.

2.0 Cable Connections

Prior to beginning, ensure the following cable connections have been properly secured:

1. Power cord is plugged in and KlasTA is on.
2. Control Port Cable is connected to the PC's serial port.
3. Control Port Cable is connected to the 'Control' port on the front of the KlasTA.
4. Black OMNixi cable is connected to the male RS-530 connector of the OMNixi and the female RS-530 synchronous serial port on the KlasTA.
5. ISDN cables are connected to the RJ-45 ISDN Output Port 1 from KlasTA and the RJ-45 S/T Input Ports on an ISDN NT1 device.

3.0 Configure the OMNixi to work with KlasTA

The OMNixi has a specific sequence of settings that allow it to encrypt data using the RS-530 serial data port. Follow the instructions from Q1000010 in order to configure the OMNixi so that it will work properly with KlasTA.

Configure a KlasTA to Answer with an OMNixi using Clear Channel

4.0 Configuring KlasTA

Open the KlasTA configuration application on your PC. Follow the steps below to configure KlasTA.

1. Click on the 'Configure' button on the opening menu.

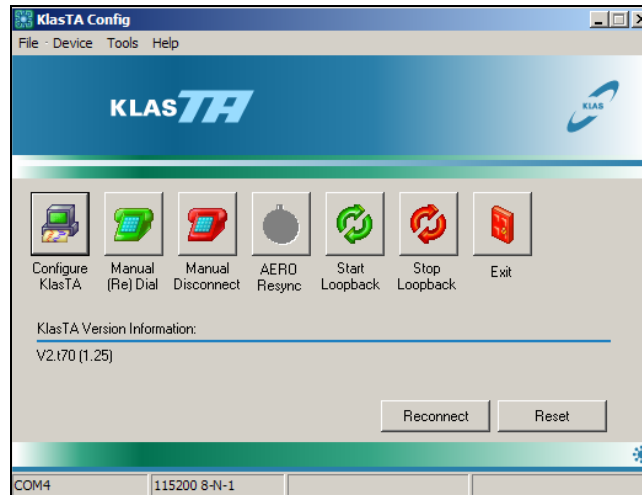


Figure 2. KlasTA Configuration Main Screen

2. Check the 'Configure KlasTA using step-by-step wizard' radio button. Click the 'Next' button to continue and move on to the next configuration screen.

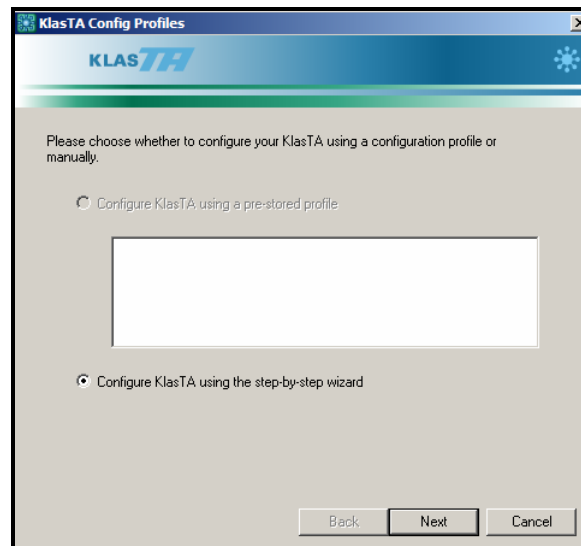
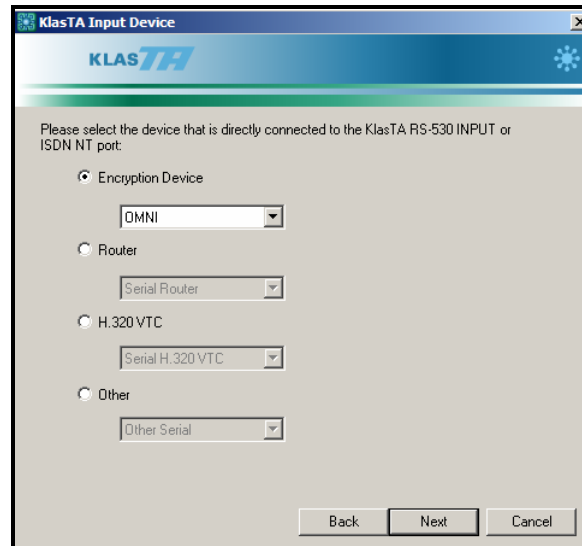


Figure 3. KlasTA Configuration Profiles Screen

Configure a KlasTA to Answer with an OMNIxi using Clear Channel

3. Check the 'Encryption Device' radio button and select OMNI as the Encryption Device from the pull-down menu. **(Note: This parameter must be identical for the KlasTAs on both sides of the call.)**



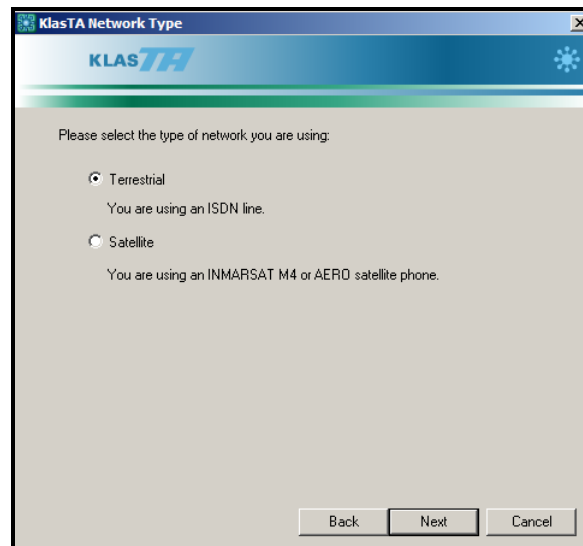
The screenshot shows a window titled "KlasTA Input Device" with the KLAS TA logo at the top. Below the logo, there is a blue header bar with a snowflake icon. The main content area contains the following text: "Please select the device that is directly connected to the KlasTA RS-530 INPUT or ISDN NT port:". There are four radio button options, each with a corresponding pull-down menu:

- Encryption Device: OMNI
- Router: Serial Router
- H.320 VTC: Serial H.320 VTC
- Other: Other Serial

At the bottom right, there are three buttons: "Back", "Next", and "Cancel".

Figure 4. KlasTA Input Device Screen

4. Select the 'Terrestrial' radio button indicating you will be answering the call from an ISDN landline BRI connection.



The screenshot shows a window titled "KlasTA Network Type" with the KLAS TA logo at the top. Below the logo, there is a blue header bar with a snowflake icon. The main content area contains the following text: "Please select the type of network you are using:". There are two radio button options:

- Terrestrial: You are using an ISDN line.
- Satellite: You are using an INMARSAT M4 or AERD satellite phone.

At the bottom right, there are three buttons: "Back", "Next", and "Cancel".

Figure 5. KlasTA Network Type Screen

Configure a KlasTA to Answer with an OMNIxi using Clear Channel

5. Select the 'Clear Channel' radio button indicating that both KlasTAs will be using the Clear Channel protocol.

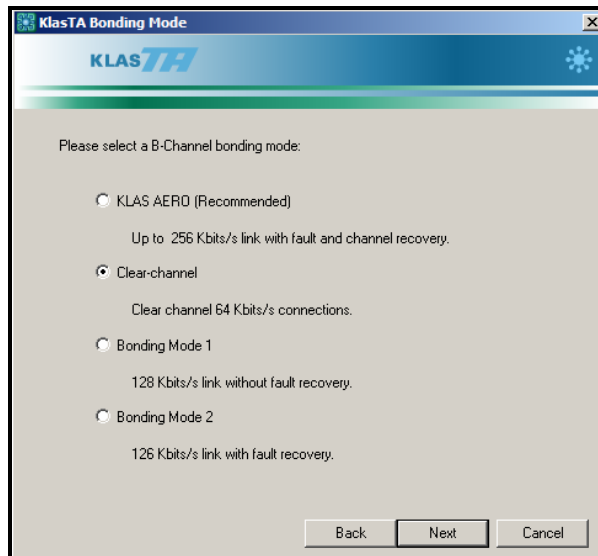


Figure 6. KlasTA Bonding Mode Screen

6. Select the 'Answer only' radio button indicating that KlasTA will continually monitor the line for incoming ISDN calls.

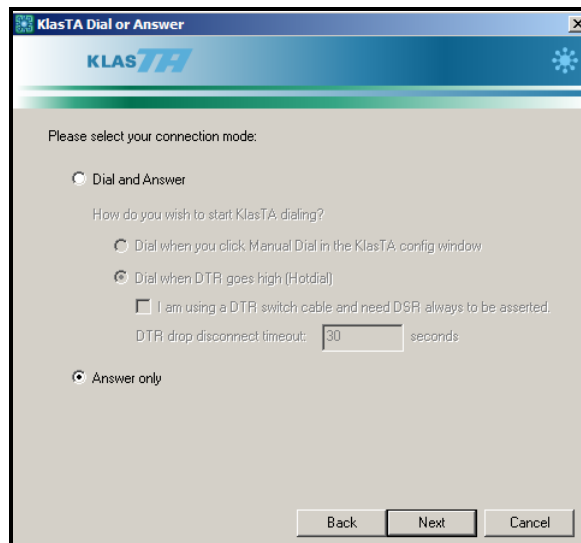


Figure 7. KlasTA Dial and Answer Screen

Configure a KlasTA to Answer with an OMNIXi using Clear Channel

7. The KlasTA Answer configuration normally gives users the option to enable Hunt Group numbering by clicking the 'My ISDN system uses Hunt Group numbering' box. Since this configuration only allows for a maximum of one number, there is no need for Hunt Group numbering. Click the 'Next' button to proceed on to the next screen.

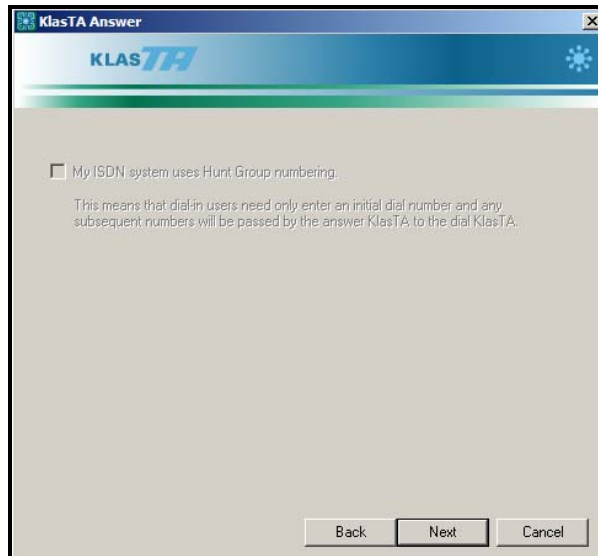


Figure 8. KlasTA Hunt Group Numbering Screen

8. Select the radio button next to the ISDN Switch-Type or D-Channel Protocol you are using, as shown in Figure 9 with the NI1/NI2 protocol. If NI1/NI2 or AT&T 5ESS is chosen, you must also enter the Service Profile Identifier (SPID) associated with the ISDN line connected to KlasTA. SPIDs are assigned by your local Telecom Provider and are unique for each 64K channel.

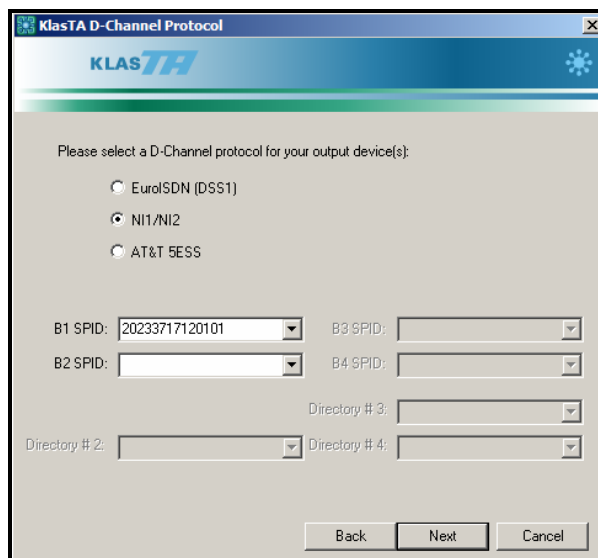
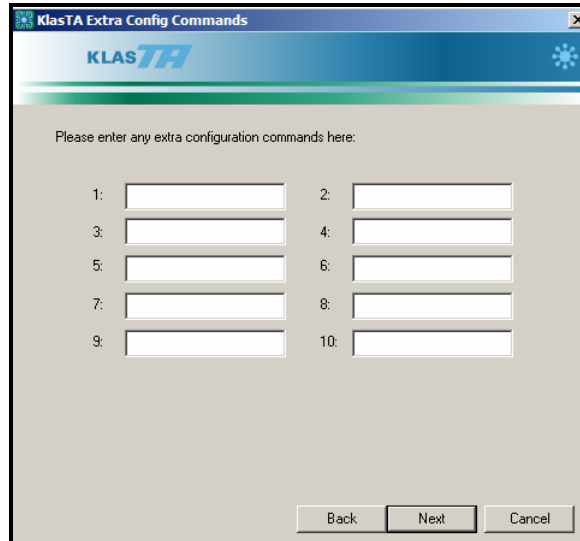


Figure 9. KlasTA D-Channel Protocol Screen

Configure a KlasTA to Answer with an OMNIxi using Clear Channel

9. The Extra Config Commands screen allows you to enter manual commands that enable seldom used features. No extra configuration commands are needed for this setup.



KlasTA Extra Config Commands

KLAS TA

Please enter any extra configuration commands here:

1: 2:

3: 4:

5: 6:

7: 8:

9: 10:

Back Next Cancel

Figure 10. KlasTA Extra Configuration Commands Screen

10. Review the configuration options to ensure they are correct and then click on the 'Configure' button to initiate the configuration sequence on the KlasTA.



KlasTA Configuration Summary

KLAS TA

Please review the following configuration details and click <Configure> to start configuring your KlasTA.

Mode:	Answer
Input Device:	OMNI
Output Device:	64K ISDN
D-Channel Protocol:	NI1
SPID 1:	20233717120101
SPID 2:	
SPID 3:	
SPID 4:	
Bonding Mode:	Clear Channel

Back Configure Cancel

Figure 11. KlasTA Configuration Summary Screen

Configure a KlasTA to Answer with an OMNIxi using Clear Channel

11. If required, KlasTA may initially erase and reflash the firmware needed to support Clear Channel, as shown in Figure 12. Once the firmware change is complete, the configuration settings will be loaded into KlasTA, as shown in Figure 13. Click on the 'OK' button once the configuration sequence has successfully completed.

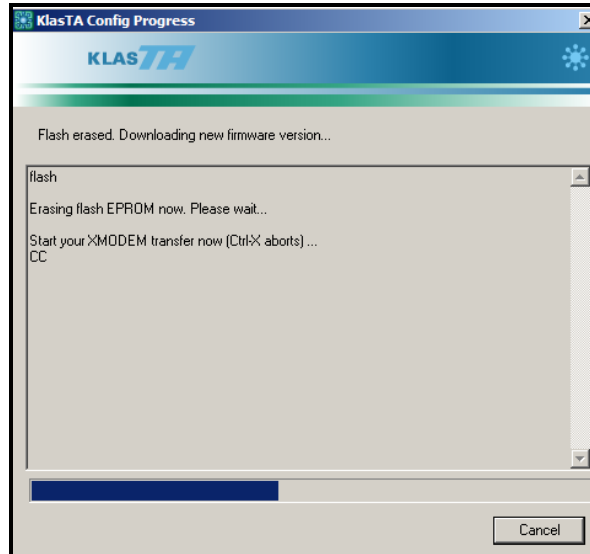


Figure 12. Downloading Clear Channel Firmware Version

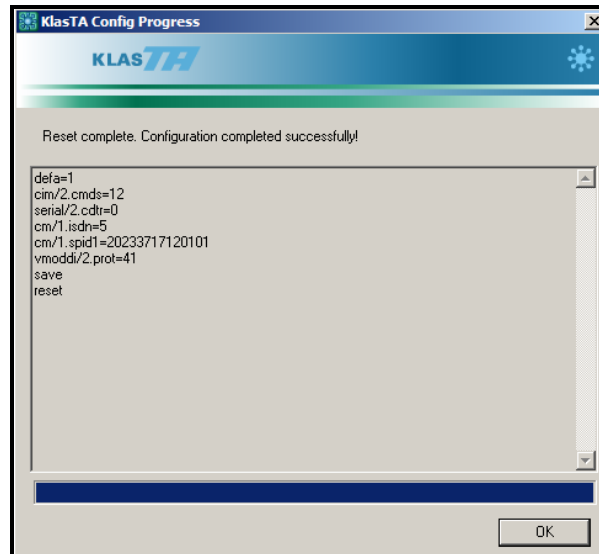


Figure 13. KlasTA Configuration Progress Screen

12. If desired, click the 'Yes' radio button to save this configuration. Click on the 'Finish' button to go back to the Main Menu.

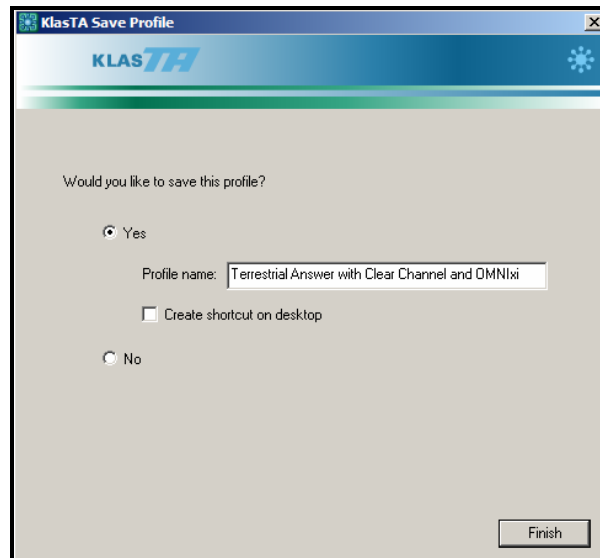


Figure 14. KlasTA Profile Screen

MORE INFORMATION

For more information about KlasTA and other Klas products, visit the following Klas website:

<www.klasonline.com>

Copyright © 2005 Klas Ltd. All rights reserved. All company and brand names are trademarks or registered trademarks of their respective owners.

DISCLAIMER OF WARRANTY: THE DOCUMENT IS PROVIDED AS IS, WITHOUT WARRANTY OF ANY KIND. TO THE MAXIMUM EXTENT PERMITTED BY APPLICABLE LAW, WITH RESPECT TO THE DOCUMENT AND / OR ANY ASSOCIATED ON-LINE INFORMATION, KLAS DISCLAIMS ALL WARRANTIES, EITHER EXPRESS OR IMPLIED, INCLUDED BUT NOT LIMITED TO IMPLIED WARRANTIES OF MERCHANTABILITY AND FITNESS FOR A PARTICULAR PURPOSE, AND NONINFRINGEMENT.

Configure a KlasTA to Answer with an OMNIxi using Clear Channel