



# Configuring KlasTA to Manual Dial with an OMNIXi using Bonding Mode 1

*KB article reference no. Q103122*

*Version: 1.0*

*Keywords: KlasTA, KIV-7, Manual Dial, Bonding Mode 1*

The information in this article applies to:

- o KlasTA
- o OMNIXi

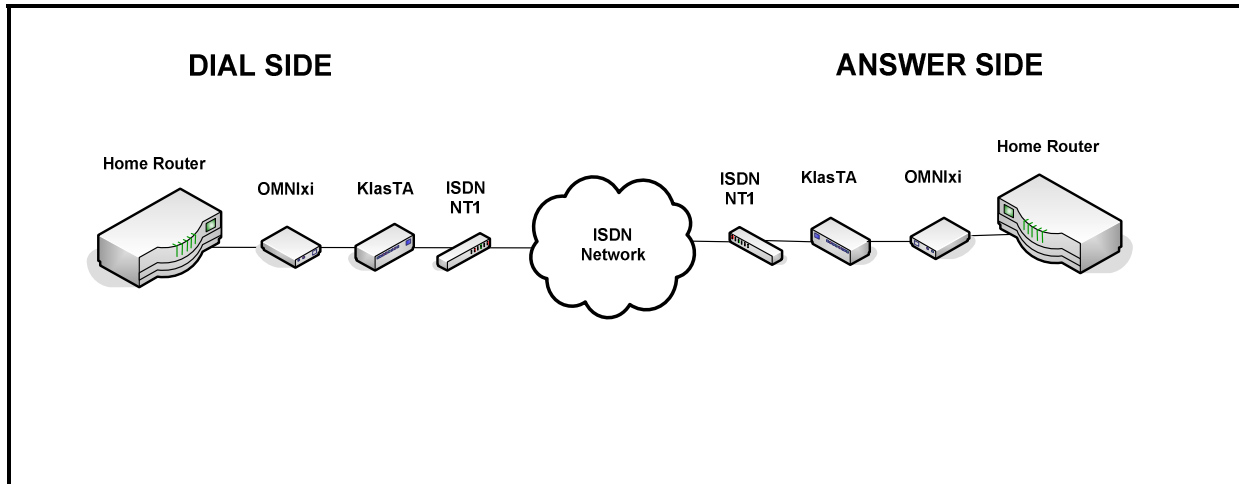
## Table of Contents

1.0 Introduction.....	2
2.0 Cable Connections .....	2
3.0 Configure the OMNIXi to work with KlasTA.....	2
4.0 Configuring KlasTA .....	3

## Table of Figures

Figure 1. Sample Scenario using the OMNIXi for Type-1 Encryption.....	2
Figure 2. KlasTA Configuration Main Screen.....	3
Figure 3. KlasTA Configuration Profiles Screen.....	3
Figure 4. KlasTA Input Device Screen.....	4
Figure 5. KlasTA Network Type Screen .....	4
Figure 6. KlasTA Bonding Mode Screen .....	5
Figure 7. KlasTA Dial and Answer Screen .....	5
Figure 8. KlasTA Dial Parameters Screen.....	6
Figure 9. KlasTA D-Channel Protocol Screen .....	6
Figure 10. KlasTA Extra Configuration Commands Screen .....	7
Figure 11. KlasTA Configuration Summary Screen.....	7
Figure 12. Downloading BM1 Firmware Version.....	8
Figure 13. KlasTA Configuration Progress Screen .....	8
Figure 14. KlasTA Profile Screen.....	9

## 1.0 Introduction



**Figure 1. Sample Scenario using the OMNixi for Type-1 Encryption**

This document describes how to configure a KlasTA connected to an OMNixi in order to manually dial a 128K connection using Bonding Mode 1 over a terrestrial ISDN line. Bonding Mode 1 is a standard protocol for multiplexing ISDN B-Channels over landline connections. Bonding Mode 1, however, has no error detection or recovery mechanisms and should not be used over a satellite connection. Follow the directions in the sections below outlining the steps from the KlasTA configuration wizard.

## 2.0 Cable Connections

Prior to beginning, ensure the following cable connections have been properly secured:

1. Power cord is plugged in and KlasTA is on.
2. Control Port Cable is connected to the PC's serial port.
3. Control Port Cable is connected to the 'Control' port on the front of the KlasTA.
4. Black OMNixi cable is connected to the male RS-530 connector of the OMNixi and the female RS-530 synchronous serial port on the KlasTA.
5. ISDN cables are connected to the RJ-45 ISDN Output Ports 1 and 2 from KlasTA and the ISDN S/T ports on the NT1 device.

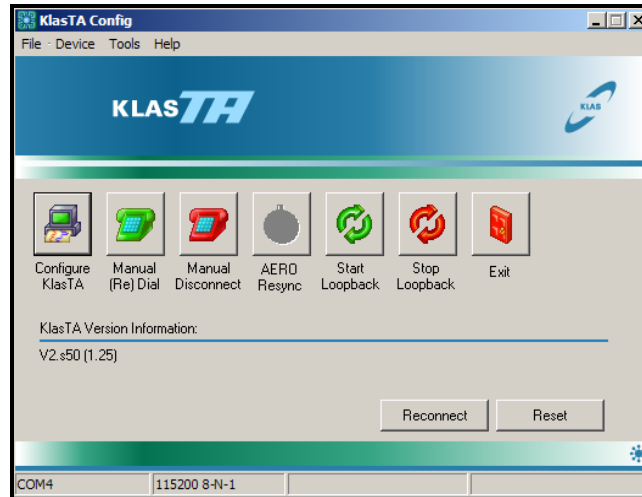
## 3.0 Configure the OMNixi to work with KlasTA

The OMNixi has a specific sequence of settings that allow it to encrypt data using the RS-530 serial data port. Follow the instructions from Application Note Q100009 in order to configure the OMNixi so that it will work properly with KlasTA.

## 4.0 Configuring KlasTA

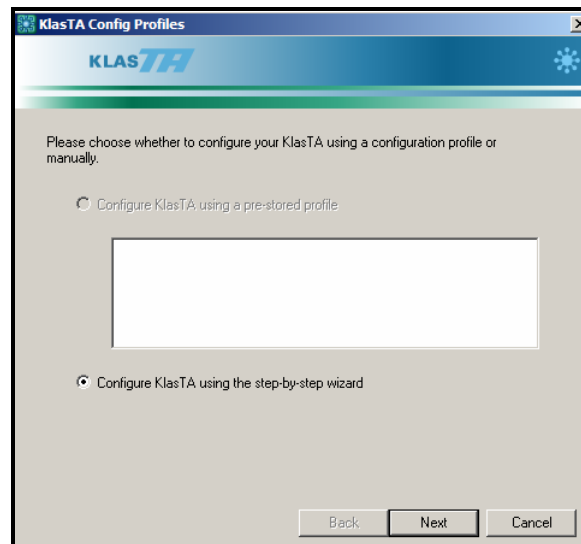
Open the KlasTA configuration application on your PC. Follow the steps below to configure KlasTA.

1. Click on the 'Configure' button on the opening menu.



**Figure 2. KlasTA Configuration Main Screen**

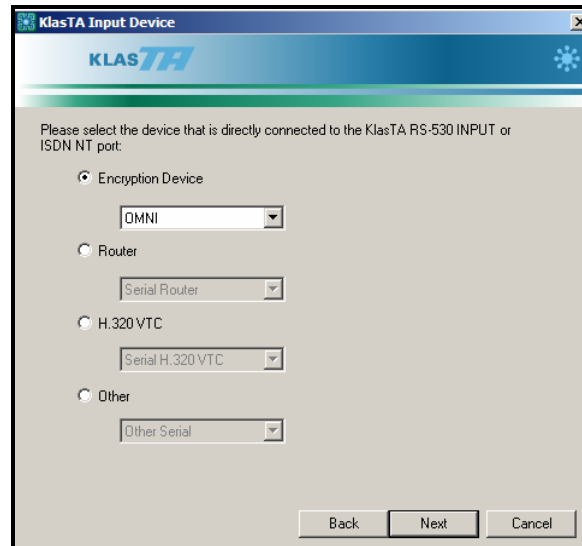
2. Check the 'Configure KlasTA using step-by-step wizard' radio button. Click the 'Next' button to continue and move on to the next configuration screen.



**Figure 3. KlasTA Configuration Profiles Screen**

### Configuring KlasTA to Manual Dial with an OMNIXi using Bonding Mode 1

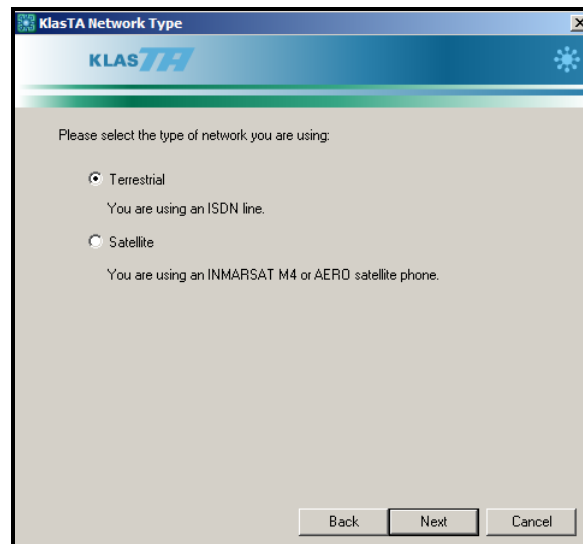
3. Check the Encryption Device radio button and select OMNI as the Encryption Device from the pull-down menu. **(Note: This parameter must be identical for the KlasTAs on both sides of the call.)**



The screenshot shows a window titled "KlasTA Input Device" with the KLAS TA logo. The text reads: "Please select the device that is directly connected to the KlasTA RS-530 INPUT or ISDN NT port." There are four radio button options: "Encryption Device" (selected), "Router", "H.320 VTC", and "Other". Each option has a corresponding pull-down menu. The "Encryption Device" menu is set to "OMNI". The "Router" menu is set to "Serial Router". The "H.320 VTC" menu is set to "Serial H.320 VTC". The "Other" menu is set to "Other Serial". At the bottom, there are three buttons: "Back", "Next", and "Cancel".

**Figure 4. KlasTA Input Device Screen**

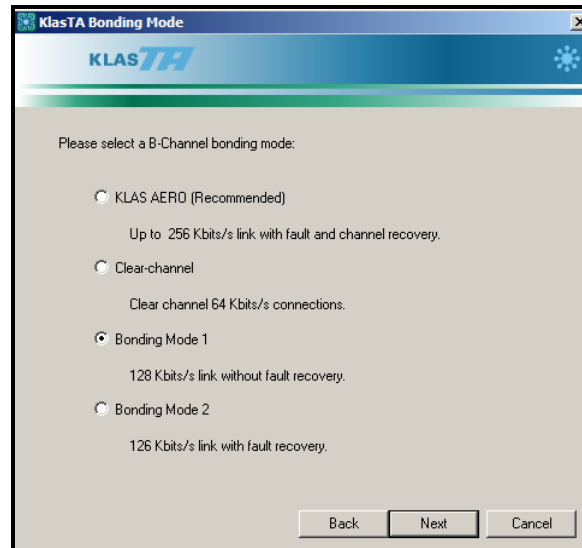
4. Select the 'Terrestrial' radio button indicating you will be dialing from a landline connection.



The screenshot shows a window titled "KlasTA Network Type" with the KLAS TA logo. The text reads: "Please select the type of network you are using." There are two radio button options: "Terrestrial" (selected) and "Satellite". Below "Terrestrial" is the text "You are using an ISDN line." Below "Satellite" is the text "You are using an INMARSAT M4 or AERO satellite phone." At the bottom, there are three buttons: "Back", "Next", and "Cancel".

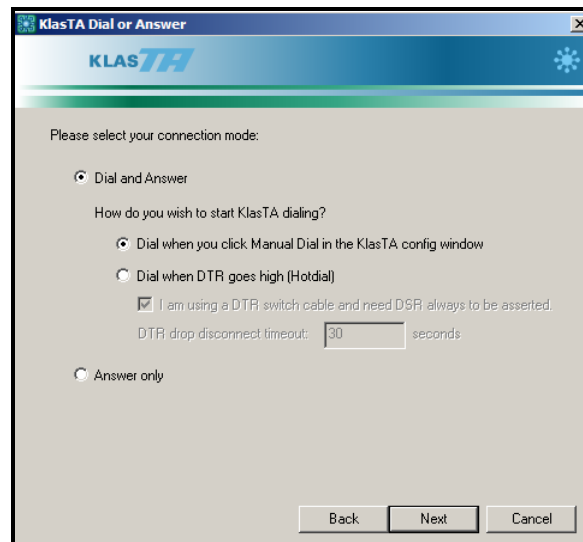
**Figure 5. KlasTA Network Type Screen**

5. Select the 'Bonding Mode 1' radio button indicating that both KlasTAs will be using the Bonding Mode 1 protocol.



**Figure 6. KlasTA Bonding Mode Screen**

6. Select the 'Dial and Answer' radio button to enable KlasTA to initiate the dialing sequence. Also, check the 'Dial when you click Manual Dial in the KlasTA config window' radio button. This option specifies that KlasTA will only dial when you push the 'Manual Dial' button on the KlasTA Configuration Wizard Main Screen.



**Figure 7. KlasTA Dial and Answer Screen**

## Configuring KlasTA to Manual Dial with an OMNIXi using Bonding Mode 1

7. Input the dial strings of the opposite KlasTA you would like to call. Since this is a 128K call, there are two 64K B-channels. Check the B2 box and then enter the two dial strings associate with each 64K channel. Ensure you type in '#' after the last digit in the dial string indicating to the KlasTA that the last number has been dialed.

**Figure 8. KlasTA Dial Parameters Screen**

8. Select the radio button next to the ISDN Switch-Type or D-Channel Protocol you are using, as shown in Figure 9 with the NI1/NI2 protocol. If NI1/NI2 or AT&T 5ESS is chosen, you must also enter the Service Profile Identifiers (SPIDs) associated the ISDN lines connected to KlasTA. SPIDs are assigned by your local Telecom Provider and are unique for each 64K channel.

**Figure 9. KlasTA D-Channel Protocol Screen**

## Configuring KlasTA to Manual Dial with an OMNIXi using Bonding Mode 1

9. The Extra Config Commands screen allows you to enter manual commands that enable seldom used features. No extra configuration commands are needed for this setup.

**Figure 10. KlasTA Extra Configuration Commands Screen**

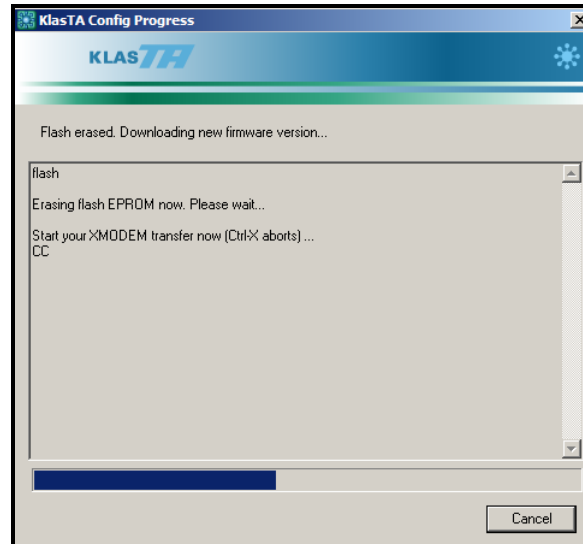
10. Review the configuration options to ensure they are correct and then click on the 'Configure' button to initiate the configuration sequence on the KlasTA. Depending on the existing stored settings, you may be alerted that this configuration requires a firmware change. Click on the 'OK' button to continue the configuration sequence.

Mode:	Dial
Input Device:	OMNI
Output Device:	128K ISDN
D-Channel Protocol:	NI1
SPID 1:	20233717120101
SPID 2:	20233717130101
SPID 3:	
SPID 4:	
Dial Method:	Manual Dial
Dial B1 #:	2023371712#
Dial B2 #:	2023371713#

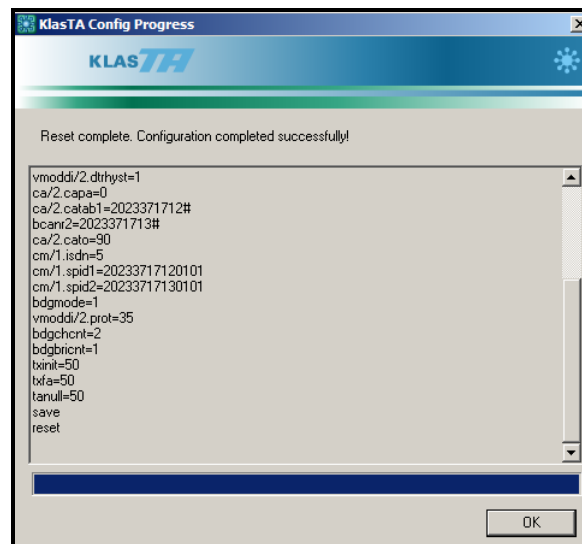
**Figure 11. KlasTA Configuration Summary Screen**

## Configuring KlasTA to Manual Dial with an OMNIXi using Bonding Mode 1

11. If required, KlasTA may initially erase and reflash the firmware needed to support Bonding Mode 1, as shown in Figure 12. Once the firmware change is complete, the configuration settings will be loaded into KlasTA, as shown in Figure 13. Click on the 'OK' button once the configuration sequence has successfully completed.



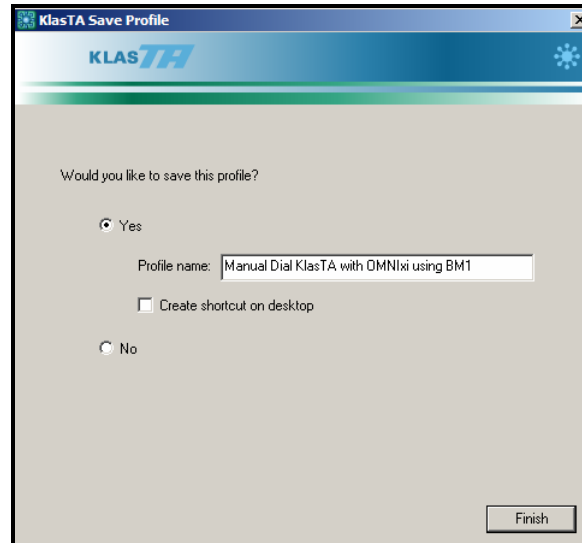
**Figure 12. Downloading BM1 Firmware Version**



**Figure 13. KlasTA Configuration Progress Screen**

## Configuring KlasTA to Manual Dial with an OMNIxi using Bonding Mode 1

12. If desired, click the 'Yes' radio button to save this configuration. Click on the 'Finish' button to go back to the Main Menu.



**Figure 14. KlasTA Profile Screen**

13. In the Main Menu, once you are ready to initiate the call, click on the 'Manual (Re) Dial' button with the green phone. This will begin the dialing sequence.

## MORE INFORMATION

For more information about KlasTA and other Klas products, visit the following Klas website:

<[www.klasonline.com](http://www.klasonline.com)>

Copyright © 2005 Klas Ltd. All rights reserved. All company and brand names are trademarks or registered trademarks of their respective owners.

**DISCLAIMER OF WARRANTY: THE DOCUMENT IS PROVIDED AS IS, WITHOUT WARRANTY OF ANY KIND. TO THE MAXIMUM EXTENT PERMITTED BY APPLICABLE LAW, WITH RESPECT TO THE DOCUMENT AND / OR ANY ASSOCIATED ON-LINE INFORMATION, KLAS DISCLAIMS ALL WARRANTIES, EITHER EXPRESS OR IMPLIED, INCLUDED BUT NOT LIMITED TO IMPLIED WARRANTIES OF MERCHANTABILITY AND FITNESS FOR A PARTICULAR PURPOSE, AND NONINFRINGEMENT.**